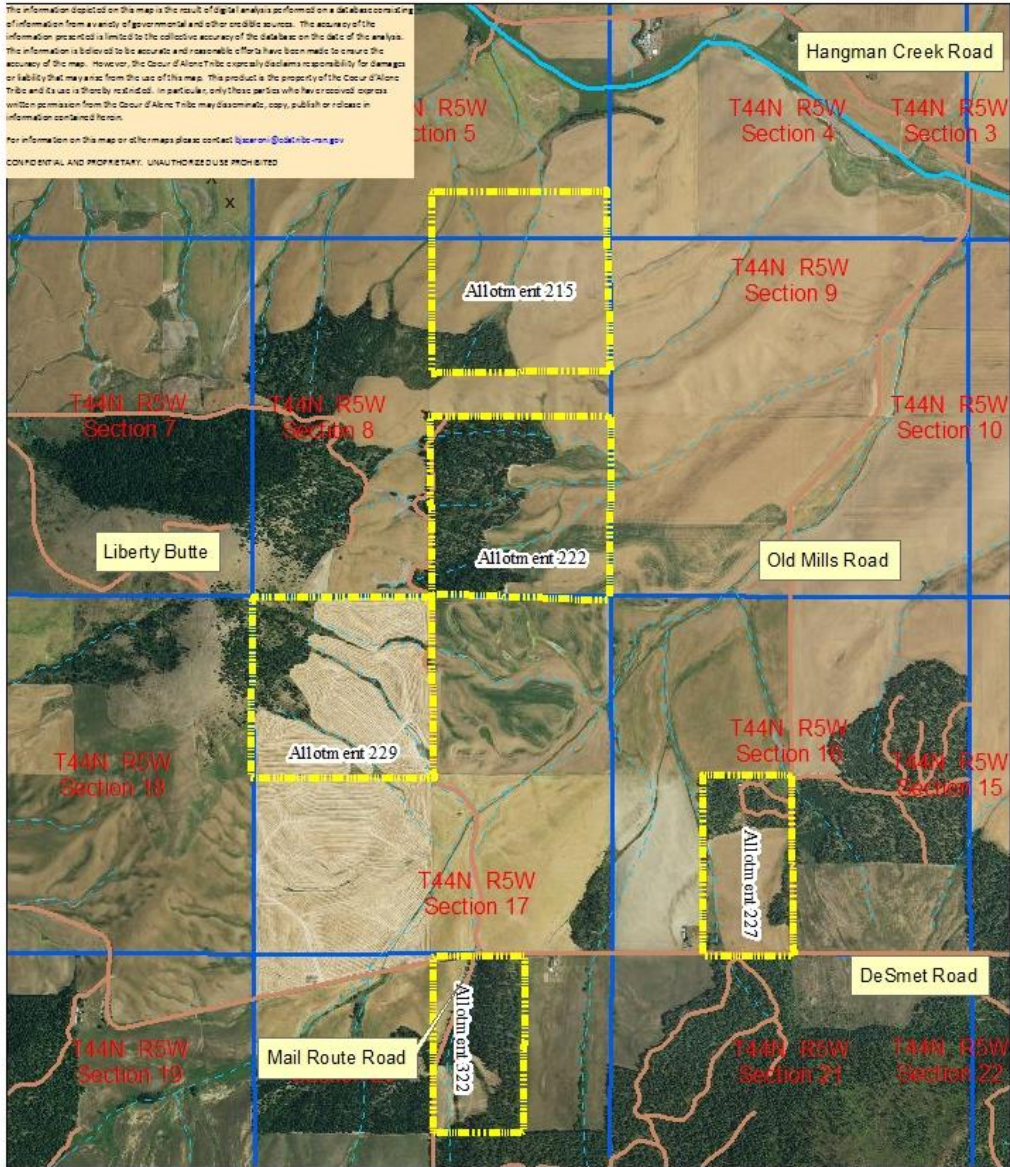


# Exhibit A: Logging Unit Map

The information depicted on this map is the result of digital analysis performed on a database consisting of information from a variety of governmental and other credible sources. The accuracy of the information presented is limited to the collective accuracy of the database on the date of the analysis. The information is believed to be accurate and reasonable efforts have been made to ensure the accuracy of the map. However, the Confederated Tribes expressly disclaims responsibility for damages or liability that may arise from the use of this map. This product is the property of the Confederated Tribes and its use is hereby restricted. In particular, only those parties who have received express written permission from the Confederated Tribes may disseminate, copy, publish or release in information contained herein.

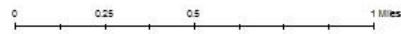
For information on this map or other maps please contact [lsarson@ctbtribe-nsn.gov](mailto:lsarson@ctbtribe-nsn.gov)

CONFIDENTIAL AND PROPRIETARY. UNAUTHORIZED USE PROHIBITED



Date: 9/27/2016

-  Hangman Creek
-  Intermittent Stream
-  Road
-  Section Line
-  Logging Unit Boundary



1 inch = 2,000 feet