

COEUR D'ALENE TRIBAL FORESTRY  
P.O. BOX 408, 850 A Street  
PLUMMER, IDAHO 83851  
(208) 686-1704 • Fax (208) 686-8600  
Request for Bids: Contract for Tree Planting, 2017

The Coeur d'Alene Tribe (Tribe) is soliciting bids, due May 9, 2017 at 11:00 am for spring tree planting on approximately 327 acres in 19 planting blocks. This notice is furnished to acquaint you with some of the requirements of the proposed contract. If you wish to submit a bid proposal, to review contract requirements, visit planting blocks or for a complete package that includes the sample contract, attachments and maps, please call Norris Boothe at (208)686-1704. Electronic copies may be requested by emailing [njboothe@cdatribe-nsn.gov](mailto:njboothe@cdatribe-nsn.gov) or may be downloaded at any time from the Development Tab at <http://www.cdatribe-nsn.gov/natural/forestry/forestry.aspx>.

You are urged to make your own independent estimate of site conditions to determine your bidding decisions. A bidder must be prepared to assume full responsibility for the success of the operation under the terms of the Contract at the prices bid. If the wording of this notice disagrees with the contract, the contract is final and binding.

#### SCOPE OF WORK

Tree Planting: The contractor shall plant approximately 126,110 tree seedlings in the planting blocks listed on the bid form and described in Table 1.

Spot Spraying: The contractor will also spot spray over approximately 73,430 seedlings on 83.8 acres, as prescribed in Table 2. Approximately 150.8 acres will be treated with the equivalent of 3 ounces per acre of Oust (sulfometaron methyl) and 1 quart per acre of glyphosate. Approximately 66.7 acres will be treated with the equivalent of 4 quarts per acre of Velpar (hexazinone). For the Upper Columbia United Tribes study, approximately 0.8 acre will be broadcast spray with the Oust/glyphosate mix and approximately 1 acre will be broadcast sprayed with 4 quarts per acre of hexazinone. Contractor shall provide the herbicide, surfactant and dye, and a Professional Applicator licensed to apply pesticides in a forested environment. The estimated amounts of herbicides needed are 72.1 ounces of Oust. 24 quarts of glyphosate and 43.5 quarts of Velpar L.

Hand scalping is required on all blocks, even where spot spray and spring burn are indicated in Table 1. Large scalps will be 18" by 18 inches, used where spraying or burning did not or will not significantly reduce competition. Small scalps will be 4" by 4" where burning or spot spraying will reduce competition.

The Tribe will perform Spring Burns if weather permits. If the Chets #6 block cannot be burned this spring, it may be removed from the planting contract, unless Contractor decides that it can still be planted at the bid price. Other spring burn blocks will be planted regardless of whether burning is completed.

Accessibility may be limited to UTV or walking to the planting blocks shown with shading in Table 1. The Tribe will provide one UTV for ferrying planters and seedlings to those blocks, if needed. Herbicide application may be delayed until soil conditions permit suitable access, at least on larger blocks.

Table 1: Planting Block Descriptions

Planting Block	Area (Acres)	Ground Cover	Aspect	Elevation	Slope (Percent)	Established Trees/acre	Planned Site Prep
Tamiyel Replant	58.0	Brush/grass	S-SW	3060	15-30%	36	Spot Spray 1
T59 fire	13.0	burned duff/ash	SW-W	3000	10-30%	N/A	Scalp
T272 Interplant	35.0	Grass/weeds	NW-N	2750	5-15%	70	Spot Spray 2
A182 burn	9.0	Grass/low brush	W - N	2750	5-15%	50	Spot Spray 1
A182 field	11.1	Grass/weeds	S	2800	5-20%	N/A	Spot Spray 2
A-357 Field	32.5	Grass/weeds	NW-NE	2670	5-15%	N/A	Spring Burn
A187 SW	14.7	Grass/weeds	NE	2640	5-15%	0	Spring Burn
T-148 Replant	2.8	Grass/weeds	W	2650	10%	N/A	Spring Burn
R-A619 Field 1	16.5	Grass/weeds	W-N	2620	5-10%	45	Spot Spray 1
R-A619 Field 2	15.5	Grass/weeds	SW-W	2670	2-15%	40	Spot Spray 1
R-A619 Field 5	23.6	Grass/weeds	SE-NW	2620	5-20%	77	Spot Spray 1
Chets #4 TOP	13.1	Slash/brush	W	4,060	20-50%	N/A	Spring Burn
Chets #6	22.9	Slash/brush	E	4,600	35-50%	N/A	Spring Burn
A567 NW	10.2	Slash/brush/grass	N-NE	2680	5-30%	N/A	<b>Various: Test</b>
Ruark Property	2.5	Grass/weeds	NE	2570	0-10%	0	Spot Spray 1
Lake Cr. #1 replant	20.6	Grass/weeds	E	2560	5-15%	95	Spot Spray 2
Lake Cr. W. replant	10.0	Grass/weeds	E-S	2550	0-10%	60	Spot Spray 1
Lake Cr. #5	5.7	Grass/weeds	S	2550	0-10%	0	Spot Spray 1
Lake Cr. #3 replant	10.0	Grass/weeds	W	2,550	5-20%	188	Spot Spray 1
Total Acres	326.7						(N/A: not available)

Table 2 shows estimated number of trees to be planted and estimated herbicide needs for each block (next page).

Table 2: Trees to plant and spray.						Spot Spray 1		SS 2
Planting Block	Area (Acres)	Trees to Plant	T/Ac	Spray Area/Ac.	Spray Area/block	Oust at 3 ounces per acre	Glyphosate at 1 quart per acre	Velpar 4 qts/ac
Tamiyel Replant	58.0	9,350	334	0.1505	8.7	26.2	8.73	
T59 fire	13.0	6,000	462	-	-	-	-	
T272 Interplant	35.0	12,600	360	0.1624	5.7	-	-	22.73
A182 burn	9.0	4,050	450	0.2030	1.8	5.5	1.83	
A182 field	11.1	4,950	446	0.2011	2.2	-	-	8.93
A-357 Field	32.5	14,175	436	-	-	-	-	
A187 SW	14.7	6,450	439	-	-	-	-	
T-148 Replant	2.8	1,350	482	-	-	-	-	
R-A619 Field 1	16.5	5,850	355	0.1599	2.6	7.9	2.64	
R-A619 Field 2	15.5	5,850	377	0.1702	2.6	7.9	2.64	
R-A619 Field 5	23.6	8,100	343	0.1548	3.7	11.0	3.65	
Chets #4 TOP	13.1	6,825	521	-	-	-	-	
Chets #6	22.9	12,480	545					
A567 NW	10.2	5,400	529	N/A	1.8	2.4	0.8	4
Ruark Property	2.5	1,080	432	0.1948	0.5	1.5	0.49	
Lake Cr. #1 Repl.	20.6	4,340	211	0.0950	2.0	0.0	0.00	7.83
Lake Cr. W. repl.	10.0	3,480	348	0.1569	1.6	4.7	1.57	
Lake Cr. #5	5.7	2,520	442	0.1994	1.1	3.4	1.14	
Lake Cr. #3 repl.	10.0	1,260	126	0.0568	0.6	1.7	0.57	-
Totals	326.7	126,110		1.9	34.9	72.1	24.0	43.5
Spray Acres/trees	198.70	73,430				51540		21890
					Acres	150.80		66.70

### COEUR D'ALENE TRIBAL EMPLOYMENT RIGHTS ORDINANCE (TERO)

Each bidder must have a current Coeur d'Alene Tribal Business License for conducting business on the Reservation, which costs \$100. A copy of the approved Business License must accompany the bid proposal. The Tribe shall give preference in awarding the contract to Indian owned businesses per Tribal Employment Rights Ordinance. A copy of TERO certification for an Indian owned business must accompany the bid proposal to receive Indian preference.

The Contractor and any subcontractors are required to meet with the TERO Director prior to start of work and complete a TERO compliance plan. For further information on TERO and its provisions contact James Nilson at (208) 686-6107.

## PREPARATION OF BID PROPOSAL

The bid proposal package shall include:

1. Bidder information and bid prices completed on the attached bid proposal form.
2. A bid deposit in the amount of 5% of the total bid price.
3. A copy of the approved Tribal Business License.
4. Optional: If bidder is eligible for Indian preference, a copy of certification as an Indian owned business from the TERO Department must be included.

Bid rates per tree will be entered into a bid summary spreadsheet that will compute bid rates per block and the total bid rate. If the bid rates per block do not agree with those on the bid proposal form, the arithmetic will be verified and the bidder will be consulted to correct any errors.

## BID SUBMITTAL

Tribal Forestry is located in the Natural Resources Building on Anne Antelope Avenue on the northern end of Plummer, west of Highway 95. Sealed bid(s) will be accepted at Coeur d'Alene Tribal Forestry, 402 Anne Antelope Avenue, Plummer, Idaho or mailed to 850 'A' Street, PO Box 408, Plummer Idaho 83851. Bids delivered to the office must be identified by "**Bid for Tree Planting, 2017**" on the outside of the envelope. The deadline for bids will be **May 9, 2017** at 11:00 AM. Bidders need not be present at the bid opening to be awarded the contract.

The contract award shall be based on the best value expected from a bidder capable of completing the work on all planting blocks. The successful bidder is required to submit:

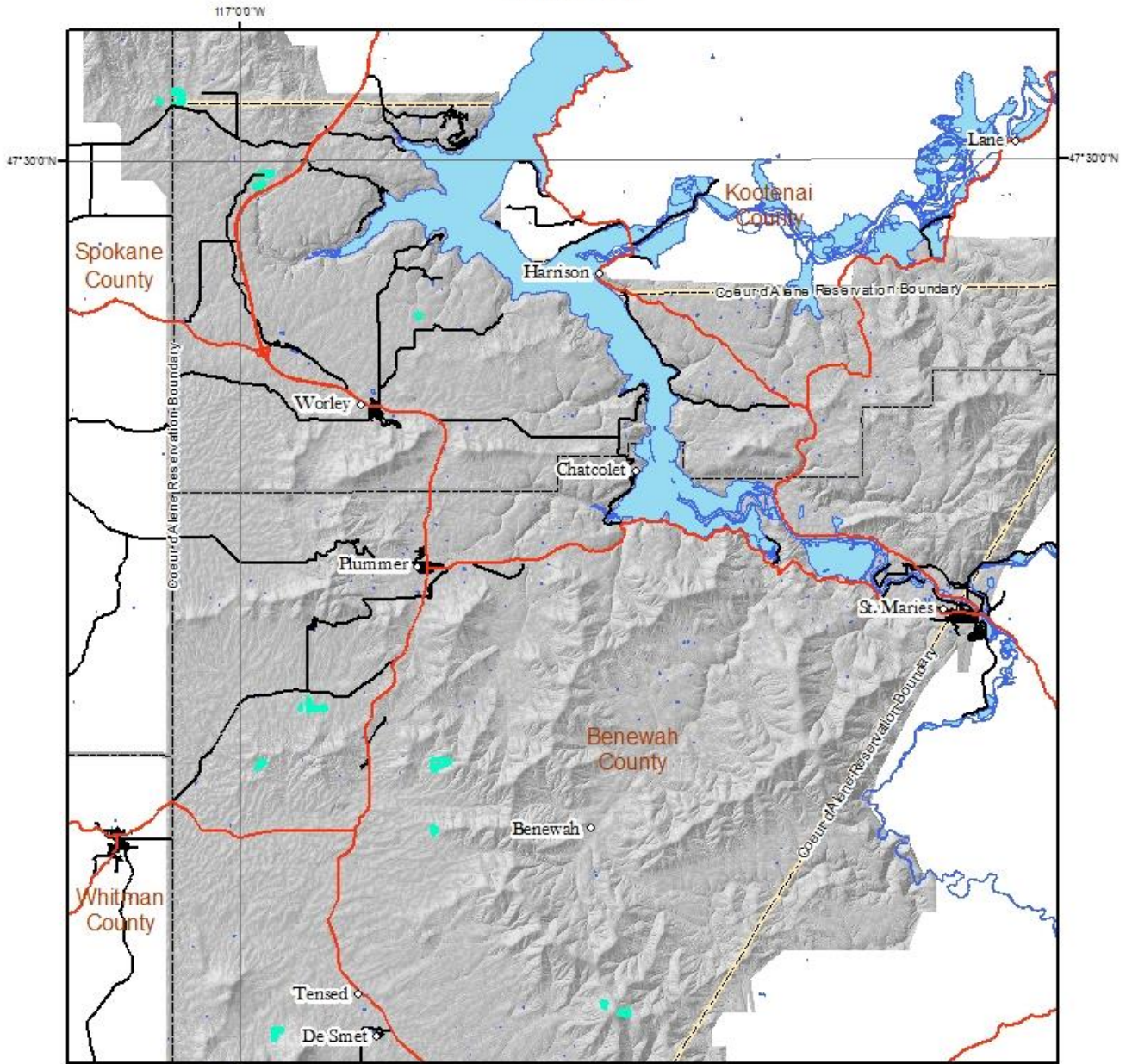
1. A completed Form W-9, Request for Taxpayer Identification Number and Certification to Tribal Forestry.
2. A performance bond equal to 5% of the total bid price, refundable upon successful completion of contract obligations. Unless other arrangements are made, the bid deposit of the successful bidder will be converted to the performance bond. All other bid deposits shall be returned to unsuccessful bidder(s) when the contract is awarded.
3. A Certification Regarding Debarment, Suspension, Ineligibility and Voluntary Exclusion, Lower Tier Covered Transactions.
4. Certificate(s) of Insurance for workers' compensation insurance and comprehensive general liability insurance in an aggregate amount of not less than one million dollars (\$1,000,000.00) that does not exclude tree planting.
5. A copy of the Pesticide License for the person who will supervise herbicide application.
6. The Contractor and Contractor's staff will participate in a 1 hour cultural resource awareness training session with CRM staff, provided free of charge, prior to or within 2 days of starting work.

## TIMEFRAME

The Contractor shall begin work as soon as practicable after receiving the approved contract and notice to proceed. Planting shall be completed May 31, 2017, and spot spraying shall be completed by the contract expiration date of June 30, 2017.

RETURN THE ENCLOSED BID FORM. BID DEPOSIT AND A SIGNED COPY OF YOUR TRIBAL BUSINESS LICENSE IN A SEALED ENVELOPE BY May 9, 2017 AT 11:00 AM. Bidders must also submit their TERO Indian Preference certification to be considered for Indian Preference bidding.  
Please allow at least 3 days if submitting by mail!

# Coeur d'Alene Reservation Tree Planting 2017 Vicinity Map



Legend	
◇	Cities
—	Highways
—	Paved Roads
—	Lakes & Rivers
■	Treatment Blocks
- - -	Reservation Boundary

The information displayed on this map is the result of digital analysis performed on a database consisting of information from a variety of governmental and other credible sources. The accuracy of the information presented is limited to the collective accuracy of the database on the date of the analysis. The information is believed to be accurate and reasonable efforts have been made to ensure the accuracy of the map. However, the Coeur d'Alene Tribe expressly disclaims responsibility for damages or liability that may arise from the use of this map. This production is property of the Coeur d'Alene Tribe and its use is thereby restricted. In particular, only those parties who have received express written permission from the Coeur d'Alene Tribe may disseminate, copy, publish or release the information contained herein.

File Name: CoCoeurind  
 For information on this map or other maps please contact us at [info@coeurtribe-tn.gov](mailto:info@coeurtribe-tn.gov)  
 CONFIDENTIAL AND PROPRIETARY: UNAUTHORIZED USE PROHIBITED.  
 Map Produced By: Coeur d'Alene Tribal Forestry on 1/14/2016



**Coeur d'Alene Tribe  
Bid Proposal: Contract for Tree Planting, 2017**

Name of bidder (Vendor): \_\_\_\_\_

Please provide contact and crew information on back of bid form.

Planting Block		Trees to be Planted	Planting Bid Rate	Spot Spray Bid Rate
Tamiyel Replant	58.0	19,350	\$ /tree	\$ /tree
T59 fire	13.0	6,000	\$ /tree	N/A
T272 Interplant	35.0	12,600	\$ /tree	\$ /tree
A182 burn	9.0	4,050	\$ /tree	\$ /tree
A182 field	11.1	4,950	\$ /tree	\$ /tree
A-357 Field	32.5	14,175	\$ /tree	N/A
A187 SW	14.7	6,450	\$ /tree	N/A
T-148 Replant	2.8	1,350	\$ /tree	N/A
R-A619 Field 1	16.5	5,850	\$ /tree	\$ /tree
R-A619 Field 2	15.5	5,850	\$ /tree	\$ /tree
R-A619 Field 5	23.6	8,100	\$ /tree	\$ /tree
Chets #4 TOP	13.1	6,825	\$ /tree	N/A
Chets #6	22.9	12,480	\$ /tree	N/A
A567 NW	10.2	5,400	\$ /tree	\$ *
Ruark Property	2.5	1,080	\$ /tree	\$ /tree
Lake Cr. #1 replant	20.6	4,340	\$ /tree	\$ /tree
Lake Cr. W. replant	10.0	3,480	\$ /tree	\$ /tree
Lake Cr. #5	5.7	2,520	\$ /tree	\$ /tree
Lake Cr. #3 replant	10.0	1,260	\$ /tree	\$ /tree
Totals:		126,110		

- Rate/tree or /acre does not apply. Enter total bid for spraying 1.8 acres.

I hereby submit the above bid for the Contract for Tree Planting, 2016. I understand that if I am the successful bidder, I will be an independent contractor and that myself, my employees, my subcontractors and my agents are not eligible to receive any of the rights or benefits otherwise available to employees of the Coeur d'Alene Tribe.

\_\_\_\_\_  
Authorized Signature & Printed name

\_\_\_\_\_  
Date

Representative: \_\_\_\_\_

Address: \_\_\_\_\_

City, State, Zip Code: \_\_\_\_\_

Telephone: \_\_\_\_\_ FAX: \_\_\_\_\_

Email: \_\_\_\_\_

Crew Size: \_\_\_\_\_ Estimated Production Rate: \_\_\_\_\_ trees per day

Qualifications (Brief summary of experience): \_\_\_\_\_

\_\_\_\_\_

Mark the sealed envelope “**Bid for Tree Planting, 2017**” and deliver by 11:00 am on May 9, 2017 to:

Coeur d’Alene Tribal Forestry  
Attn: Carrie Horlacher  
402 Ann Antelope Avenue

Mailing Address: Coeur d’Alene Tribal Forestry  
Attn: Carrie Horlacher  
P.O. Box 408, 850 A Street  
Plummer, ID 83851