

# BROWNFIELDS



## TRIBAL RESPONSE PROGRAM



# TABLE



# OF CONTENT

<b>03</b>	<b>Overview</b>	.....	
<b>04</b>	<b>Key definitions</b>	.....	
<b>05</b>	<b>Old Tensed Landfill</b>	.....	
<b>06</b>	<b>Event Planning Basic</b>	.....	
<b>07</b>	<b>Worley Cooperative Supply</b>	.....	
<b>08</b>	<b>Old Agency Courts Building</b>	.....	
<b>09</b>	<b>Plummer Pole Yard</b>	.....	
<b>11</b>	<b>Get In Touch</b>	.....	

# OVERVIEW



The Coeur d'Alene Tribe's (Tribe) Environmental Programs Office in the Natural Resources Department manages programs to enhance and protect the environment and health of the population on and near the Coeur d'Alene Reservation. The addition of the U.S. Environmental Protection Agency (EPA) Section 128(a) Tribal Response Program (TRP), otherwise known as Brownfields, allows the Tribe to address the management and restoration of potentially contaminated and/or contaminated properties that may affect Tribal lands.

Section 101 of the Comprehensive Environmental Response, Compensation and Liability Act of 1980 (42 U.S.C. 9601) defines a "brownfield site" as "real property, the expansion, redevelopment, or reuse of which may be complicated by the presence or potential presence of a hazardous substance, pollutant or contaminant."

**THE PURPOSE OF THIS GRANT-FUNDED PROJECT IS TO IDENTIFY AND COMPILE INFORMATION ON BROWNFIELDS SITES, RESEARCH ASSESSMENT AND CLEAN-UP OPPORTUNITIES ON TRIBAL AND RESERVATION LANDS, CONDUCT PUBLIC PARTICIPATION ACTIVITIES, AND DEVELOP THE TRIBE'S BROWNFIELDS PROGRAM.**

## WHAT WE DO:

- Maintain a survey and inventory of known or suspected contaminated properties.
- Update and manage data, assessments, and reports related to Tribal lands.
- Establish and maintain a publicly accessible record of Brownfields sites.
- Develop outreach initiatives and public participation materials to engage the community.
- Compile reference materials to guide assessment, cleanup planning, verification, and certification, ensuring all processes are based on sound science and accepted practices.
- Conduct site-specific Environmental Site Assessments as needed.



## KEY DEFINITIONS



### Inventory:

An inventory includes the timely survey of known and suspected brownfields sites. This includes sites where cleanup actions have occurred, brownfields are suspected, or other known brownfield sites. (Link to online database coming soon)

### Site Specific Actions:

Site Specific Actions include Environmental Site Assessments (ESAs) and Cleanup Actions.

### Phase I ESA:

Phase I ESAs are initial investigations into possible signs of contamination or environmental concerns at a site. Phase I ESAs include a review of the records about the site, interviews with those knowledgeable about the site and its operation, and a field visit to look for signs of environmental concerns. A Phase I ESA does not include any environmental sampling.

### Phase II ESA:

A Phase II ESA is a more narrowly focused investigation into possible contaminants of concern. Phase II ESAs include sampling of soils, sediments, ground or surface waters, and materials used at the site. A Phase II ESA informs what, if any actual contamination is found within the site and can be used to guide future actions.

### Cleanup Actions:

A cleanup is when known environmental contaminants are removed and disposed of appropriately from a site. Once a cleanup is successful, a site can be reused on a limited or unrestricted basis depending on the cleanup.

## PAST ACTIVITIES:

During the past several years the Coeur d'Alene Tribe's Brownfield Program identified potential brownfield sites. Three sites were selected by the Tribe, and approved by EPA, to conduct Phase I and Phase II Environmental Site Assessments (ESA). Results of field sampling were used to determine if contaminants were present and required remedial action to restore the site for redevelopment

# OLD TENSED TOWN LANDFILL



## PROPERTY OVERVIEW

The Old Tensed Town Landfill Site is located approximately 1.5 miles west of the town of DeSmet on the north side of DeSmet Road at latitude 47.1502, longitude -116.9781. The site is land held in trust by the U.S. Government for the Coeur d'Alene Tribe. The main portion of the site is approximately 6 to 7 acres. This site was used as an unregulated waste dumping area as early as 1965 by citizens of Tensed and DeSmet and the surrounding areas; however, the exact years of the landfill operation are unknown. The landfill was closed just prior to 1990 by the placement of a non-engineered cap of topsoil. Surface water flowing over and perched groundwater flowing through the landfill may have been impacted by the remnants of the landfill. Following the closure, uncontrolled dumping continued to occur along the dirt access road for some time. The surface debris was cleaned up over a decade ago.

The Coeur d'Alene Tribe completed a Phase I ESA report at the Old Tensed Town Landfill which recommended conducting soil and groundwater sampling at the site to determine whether contaminants impacted the site soils and groundwater. Subsequently, the Tribe's Brownfield Program completed a draft Phase II Environmental Site Assessment report to determine the potential presence, extent and magnitude of a wide range of environmental contaminants. The Tribe sampled soil and groundwater on August 12-20, 2019 and April 13-21, 2020 for the report. Initial sampling analysis discovered three types of contaminants: 1) arsenic concentrations near regional background with elevated concentrations at two locations, 2) Dioxin Regional Screening Level (RSL) for resident soil exceedances were found at three locations, and 3) 4,4-DDT RSL exceedance was found at one location.

In 2025, the Tribe is determining with EPA if additional site characterization and sampling is needed at the Old Tensed Town Landfill. A review of the report indicates that additional exploratory work and sampling is recommended to evaluate potential impacts to shallow ground water at the site. Sample data collected from these activities will be used to evaluate potential need for remedial action, potential closure activities, and monitoring if needed.

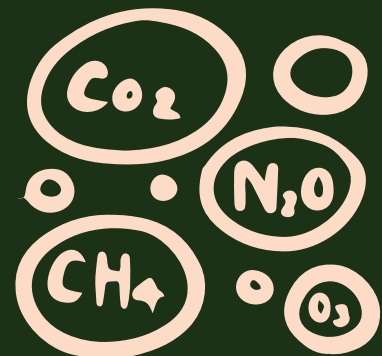
## WORLEY CO-OPERATIVE SUPPLY



### PROPERTY OVERVIEW

The Coeur d'Alene Tribe completed a draft Phase I ESA report at the former Worley Co-Operative Supply site located at 9815 and 9819 W "F" Street, Worley, Idaho. The site is approximately 0.8 acres in size. The land is held in fee status by the Coeur d'Alene Tribe. The site was developed in the early 1930's. It operated as a farmer co-operative supply store for more than 50 years. A residential house also occupied the site. It is known that the co-op primarily sold petroleum, fertilizer, seed, and feed.

In 1998, leakage from two abandoned underground storage tanks was discovered. The release of petroleum to the soil and groundwater was remediated to the EPA's satisfaction in December 2002. The draft Phase I ESA report recommends conducting soil and groundwater sampling (Phase II ESA) at the site to determine whether contaminants impacted the site soils and groundwater. Environmental concerns documented in the report include the former storage and dispensing of petroleum products, sales of farm chemicals, and hazardous building materials of the demolished structures. A work plan was completed and assessment activities are scheduled for fall of 2024



# OLD AGENCY COURTS BUILDING

## PROPERTY OVERVIEW

The Coeur d'Alene Tribe completed a draft Phase I ESA report of the Old Agency Courts Building. This property is located on Old Agency Road, and situated on Parcel RP46N05W227800A, Plummer, Idaho. The site is located on Indian land held in trust by the U.S. Government at latitude 47.3142, longitude -116.9545. The Subject Site occupies a small portion of the parcel (approximately ½ acre) and is identified as the Old Agency Courts Building and surrounding grounds. The building is approximately 8,000 square feet and previously housed the Tribal court room and administrative offices. The Phase I ESA report recommended the performance of a Hazardous Materials Survey to address environmental issues related to potential hazardous building materials in the structure. A Hazardous Materials Survey was conducted on September 22, 2022 that examined the structure for asbestos-containing materials (ACM), suspect lead-based paint (LBP) and complete a visual inspection to identify mercury-containing equipment, fluorescent lights and ballasts, Polychlorinated Biphenyl (PCB) containing equipment, chlorofluorocarbons (CFCs) containing equipment, as well as any other potentially hazardous materials that may be present in the building which could present an exposure risk during demolition or renovation activities. A Hazardous Materials Survey and an Analysis of Brownfields Clean up Alternatives (ABCA) was completed in 2024 and abatement of the asbestos containing materials was completed in the spring of 2024. In addition, hazardous materials with mercury switches and PCB light ballasts were removed and properly disposed. Building demolition was completed in Summer 2024.



# PLUMMER POLE YARD



## PROPERTY OVERVIEW

The pole yard site is a 33-acre Brownfield site, owned by the City of Plummer, that was historically used for wood treating operations. During the late 1950s and early 1960s, Union Pacific Railroad leased a portion of the site set aside for a railroad depot to support a variety of industrial wood products operators that conducted activities such as pole peeling and wood utility pole treating. It is suspected that the wooden poles were treated with a chemical mixture of creosote and pentachlorophenol (PCP) in diesel. Laboratory analysis of pole treatment chemicals discovered creosote,

pentachlorophenol (PCP), diesel, oil, and PAH in the soils and groundwater. The EPA conducted a Targeted BF Assessment in 2020-2021 and conducted a Time Critical Removal Action in 2022. During the removal action, EPA contractors removed 3460 tons of contaminated soil and disposed of it in two landfills that accept contaminated soil.

## CENTER FOR CREATIVE LAND RECYCLING -VISION TO ACTION

The Tribe has been coordinating with the City of Plummer on this site for many years. In June of 2024, In cooperation with the Center for Creative Land Recycling (CCLR) and the City of Plummer. Our first Vision to Action meeting was held on June 13th at the Coeur d’Alene Tribble Wellness Center Facility. At this meeting a history and overview of the area was provided and then surveys were conducted along with the documentation of discussion on potential reuse of the site. A second community meeting will be held on July 31st where CCLR staff will present on the ideas gathered at the first meeting in order to prioritize the community focus for site reuse.

— “ —

FOR MORE INFORMATION PLEASE VISIT:  
[HTTPS://WWW.CCLR.ORG/PROJECT-HIGHLIGHTS/VISION-TO-ACTION-COMMUNITY-LED-REUSE-IN-PLUMMER-IDAHO](https://www.cclr.org/project-highlights/vision-to-action-community-led-reuse-in-plummer-idaho)

— ” —

# PLUMMER POLE YARD


## EPA LAND REVITALIZATION TECHNICAL ASSISTANCE PROGRAM

### PROPERTY OVERVIEW

Following the completion of the Vision-to-Action process with CCLR in the fall of 2024, the Tribe and City received additional technical assistance from the EPA Land Revitalization Program. This support included funding to engage a consulting firm to host another community meeting, aimed at finalizing a comprehensive vision based on input from prior community discussions.

One key outcome of this process was the incorporation of the community's desire to restore natural areas on the site. Specifically, a wetland restoration project on Plummer Creek, which extends through the southern portion of the site, was integrated into the vision.

This process resulted in a site plan and a funding and finance roadmap document to help the City and Tribe pursue future development that aligns with community goals, is financially viable, and supports sustainable growth.



**MOVING THE VISION FORWARD**

### PLUMMER POLE YARD COMMUNITY VISIONING WORKSHOP

The City of Plummer & Coeur d'Alene Tribe Environmental Programs Office welcomes you once again to share your ideas on the future of the Plummer Pole Yard!

**WEDNESDAY DECEMBER 4TH**  
4:00PM - 6:30PM

**THE WELLNESS CENTER**  
1100 A ST PLUMMER ID 83851

REFRESHMENTS PROVIDED

City of Plummer | COEUR D'ALENE TRIBE | EPA

CONTACT: GINA BAUGHN (208) 686-2107  
GINA.BAUGHN@CDATRIBE-NSN.GOV

**FOR MORE INFORMATION PLEASE VISIT**  
[HTTPS://WWW.EPA.GOV/LAND-REVITALIZATION/LAND-REVITALIZATION-TECHNICAL-ASSISTANCE-PROJECTS](https://www.epa.gov/land-revitalization/land-revitalization-technical-assistance-projects)

# FUTURE BROWNFIELDS ACTIVITIES

Next year, the Tribe is planning to conduct additional brownfield activities on selected sites that include:



**ADDITIONAL SAMPLING AT THE OLD TENSED TOWN LANDFILL**



**PHASE II ESA SOIL AND GROUNDWATER SAMPLING AT THE WORLEY CO-OPERATIVE SUPPLY**



**EVALUATION FOR HAZARDOUS BUILDING MATERIALS AT THE WORLEY SUPPER CLUB**



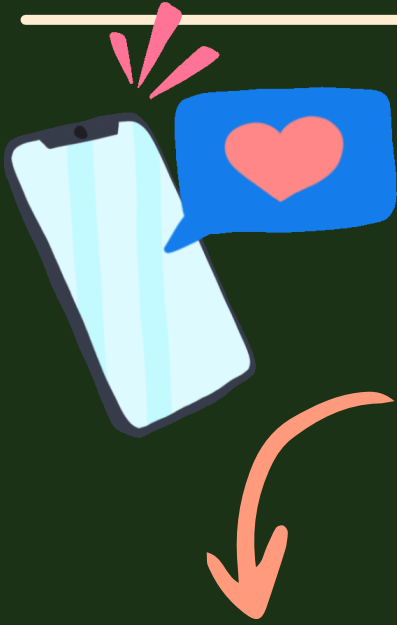
**OPEN SOLICITATION TO EVALUATE ADDITIONAL SITES**

The Tribe will also continue to work on building the components of a Brownfields Program that include ongoing development of Standard Operating Procedures, completion of the Community Outreach Plan, and the development of the Tribe's Environmental Regulatory Code.

Funding for this project is provided by  
The U.S.  
Environmental  
Protection Agency.



STILL LOOKING FOR MORE  
INFORMATION OR NEED TO  
SUBMIT A BROWNFIELDS SITE?



**COEUR D'ALENE  
TRIBE**

**Gina Baughn**  
Clean Lands Coordinator  
khwek' wu' lumkhw

Natural Resources  
402 Anne Antelope Rd.  
PO Box 408  
Plummer, ID 83851

Office: (208) 686-2107  
Cell: (509) 723-7360  
gina.baughn@cdatribe-nsn.gov

*OR*

*click  
here!*

[www.cdatribe-nsn.gov/nr/environmentalprograms-office/brownfield-tribal-response-program/](http://www.cdatribe-nsn.gov/nr/environmentalprograms-office/brownfield-tribal-response-program/)

