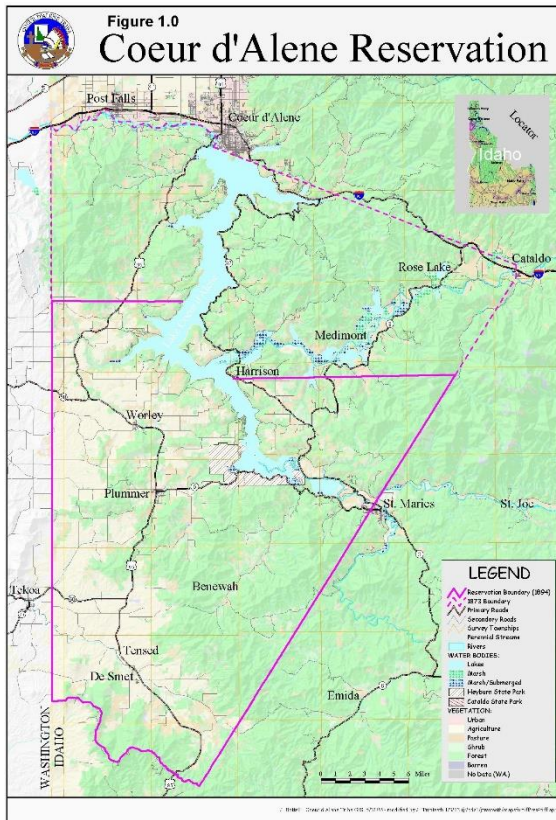


Coeur d'Alene Tribe Brownfields Program

Summer 2024



The Coeur d'Alene Tribe's (Tribe) Environmental Programs Office in the Natural Resources Department manages programs to enhance and protect the environment and health of the population on and near the Coeur d'Alene Reservation. The addition of the U.S. Environmental Protection Agency (EPA) Section 128(a) Tribal Response Program (TRP), otherwise known as Brownfields, allows the Tribe to address the management and restoration of potentially contaminated and/or contaminated properties that may affect Tribal lands.

Section 101 of the Comprehensive Environmental Response, Compensation and Liability Act of 1980 (42 U.S.C. 9601) defines a "brownfield site" as "real property, the expansion, redevelopment, or reuse of which may be complicated by the presence or potential presence of a hazardous substance, pollutant or contaminant."

The purpose of this grant-funded project is to identify and compile information on potential Brownfields sites, research assessment and clean-up opportunities on Tribal and Reservation lands, conduct public participation activities, and develop the Tribe's Brownfields Program.

With this funding the Tribe has started to take steps to establish and enhance the Tribe's Brownfields Program including:

- Maintaining a survey and inventory of known or suspected contaminated properties,
- Updating and maintaining data, assessments, and reports conducted on Tribal Lands,
- Establishing and maintaining a Public Record,
- Developing outreach and public participation activities and materials on Brownfields,
- Compiling reference material to ensure the assessment, cleanup plan, verification, and certification that cleanup is complete and protective of human health and the environment that is based on sound science and accepted practices, and
- Conducting site-specific Environmental Site Assessments as needed.

Inventory

An inventory includes the timely survey of known and suspected brownfields sites. This includes sites where cleanup actions have occurred, brownfields are suspected, or other known brownfield sites.

Survey of known and suspected brownfields site ([Link to online site coming soon](#))

Site Specific Actions

Site Specific Actions include *Environmental Site Assessments (ESAs)* and *Cleanup Actions*.

Phase I ESA

Phase I ESAs are initial investigations into possible signs of contamination or environmental concerns at a site. Phase I ESAs include a review of the records about the site, interviews with those knowledgeable about the site and its operation, and a field visit to look for signs of environmental concerns. A Phase I ESA does not include any environmental sampling.

Phase II ESA

A Phase II ESA is a more narrowly focused investigation into possible contaminants of concern. Phase II ESAs include sampling of soils, sediments, ground or surface waters, and materials used at the site. A Phase II ESA informs what, if any actual contamination is found within the site and can be used to guide future actions.

Cleanup Actions

A cleanup is when known environmental contaminants are removed and disposed of appropriately from a site. Once a cleanup is successful, a site can be reused on a limited or unrestricted basis depending on the cleanup.

Past Brownfields Activities

During the past several years the Coeur d'Alene Tribe's Brownfield Program identified potential brownfield sites. Three sites were selected by the Tribe, and approved by EPA, to conduct Phase I and Phase II Environmental Site Assessments (ESA). A Phase I ESA is a document and record review and site inspection to identify Recognized Environmental Concerns (RECs) that may exist from historical site use. A Phase II ESA is a document of the results of field sampling to determine if contaminants are present and require remedial action to restore the site for redevelopment.

Old Tensed Town Landfill

The Old Tensed Town Landfill Site is located approximately 1.5 miles west of the town of DeSmet on the north side of DeSmet Road at latitude 47.1502, longitude -116.9781. The site is land held in trust by the U.S. Government for the Coeur d'Alene Tribe. The main portion of the site is approximately 6 to 7 acres. This site was used as an unregulated waste dumping area as early as 1965 by



citizens of Tensed and DeSmet and the surrounding areas; however, the exact years of the landfill operation are unknown. The landfill was closed just prior to 1990 by the placement of a non-engineered cap of topsoil. Surface water flowing over and perched groundwater flowing through the landfill may have been impacted by the remnants of the landfill. Following the closure, uncontrolled dumping continued to occur along the dirt access road for some time. The surface debris was cleaned up over a decade ago.

The Coeur d'Alene Tribe completed a Phase I ESA report at the Old Tensed Town Landfill which recommended conducting soil and groundwater sampling at the site to determine whether contaminants impacted the site soils and groundwater. Subsequently, the Tribe's Brownfield Program completed a draft Phase II Environmental Site Assessment report to determine the potential presence, extent and magnitude of a wide range of environmental contaminants. The Tribe sampled soil and groundwater on August 12-20, 2019 and April 13-21, 2020 for the report. Initial sampling analysis discovered three types of contaminants: 1) arsenic concentrations near regional background with elevated concentrations at two locations, 2) Dioxin Regional Screening Level (RSL) for resident soil exceedances were found at three locations, and 3) 4,4-DDT RSL exceedance was found at one location.

For the next year, the Tribe is determining with EPA if additional site characterization and sampling is needed at the Old Tensed Town Landfill. A review of the report indicates that additional exploratory work and sampling is recommended to evaluate potential impacts to shallow ground water at the site. Sample data collected from these activities will be used to evaluate potential need for remedial action, potential closure activities, and monitoring if needed.

Worley Co-operative Supply



The Coeur d'Alene Tribe completed a draft Phase I ESA report at the former Worley Co-Operative Supply site located at 9815 and 9819 W "F" Street, Worley, Idaho. The site is approximately 0.8 acres in size. The land is held in fee status by the Coeur d'Alene Tribe. The site was developed in the early 1930's. It operated as a farmer co-operative supply store for more than 50 years. A residential house also occupied the site. It is known that the co-op primarily sold petroleum, fertilizer, seed, and feed. In 1998, leakage from two

abandoned underground storage tanks was discovered. The release of petroleum to the soil and groundwater was remediated to the EPA's satisfaction in December 2002. The draft Phase I ESA report recommends conducting soil and groundwater sampling (Phase II ESA) at the site to determine whether contaminants impacted the site soils and groundwater. Environmental concerns documented in the report include the former storage and dispensing of petroleum products, sales of farm chemicals, and hazardous building materials of the demolished structures. A work plan was completed and assessment activities are scheduled for fall of 2024.

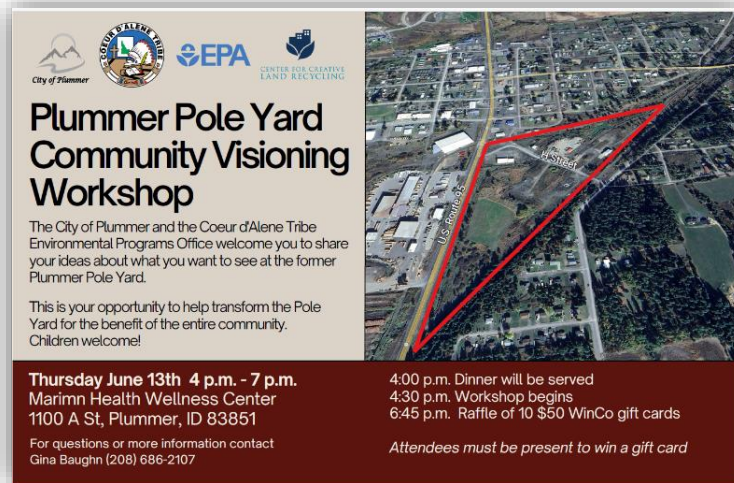
Old Agency Courts Building

The Coeur d'Alene Tribe completed a draft Phase I ESA report of the Old Agency Courts Building. This property is located on Old Agency Road, and situated on Parcel RP46N05W227800A, Plummer, Idaho. The site is located on Indian land held in trust by the U.S. Government at latitude 47.3142, longitude -116.9545. The Subject Site occupies a small portion of the parcel (approximately ½ acre) and is identified as the Old Agency Courts



Building and surrounding grounds. The building is approximately 8,000 square feet and previously housed the Tribal court room and administrative offices. The Phase I ESA report recommended the performance of a Hazardous Materials Survey to address environmental issues related to potential hazardous building materials in the structure. A Hazardous Materials Survey was conducted on September 22, 2022 that examined the structure for asbestos-containing materials (ACM), suspect lead-based paint (LBP) and complete a visual inspection to identify mercury-containing equipment, fluorescent lights and ballasts, Polychlorinated Biphenyl (PCB) containing equipment, chlorofluorocarbons (CFCs) containing equipment, as well as any other potentially hazardous materials that may be present in the building which could present an exposure risk during demolition or renovation activities. A Hazardous Materials Survey and an Analysis of Brownfields Clean up Alternatives (ABCA) was completed in 2024 and abatement of the asbestos containing materials was completed in the spring of 2024. In addition, hazardous materials with mercury switches and PCB light ballasts were removed and properly disposed. Once the final report is completed demolition can be scheduled for summer 2024.

Plummer Pole Yard



The flyer for the Plummer Pole Yard Community Visioning Workshop features logos for the City of Plummer, Coeur d'Alene Tribe, EPA, and Center for Creative Land Recycling. It includes an aerial map of the site with a red outline. The text provides details about the workshop, including the date, time, location, and contact information.

Plummer Pole Yard Community Visioning Workshop

The City of Plummer and the Coeur d'Alene Tribe Environmental Programs Office welcome you to share your ideas about what you want to see at the former Plummer Pole Yard.

This is your opportunity to help transform the Pole Yard for the benefit of the entire community. Children welcome!

Thursday June 13th 4 p.m. - 7 p.m.
Marimn Health Wellness Center
1100 A St, Plummer, ID 83851

For questions or more information contact
Gina Baughn (208) 686-2107

4:00 p.m. Dinner will be served
4:30 p.m. Workshop begins
6:45 p.m. Raffle of 10 \$50 WinCo gift cards

Attendees must be present to win a gift card

The pole yard site is a 33-acre Brownfield site, owned by the City of Plummer, that was historically used for wood treating operations. During the late 1950s and early 1960s, Union Pacific Railroad leased a portion of the site set aside for a railroad depot to support a variety of industrial wood products operators that conducted activities such as pole peeling and wood utility pole treating. It is suspected that the

wooden poles were treated with a chemical mixture of creosote and pentachlorophenol (PCP) in diesel. Laboratory analysis of pole treatment chemicals discovered creosote, pentachlorophenol (PCP), diesel, oil, and PAH in the soils and groundwater. The EPA conducted a Targeted BF Assessment in 2020-2021 and conducted a Time Critical Removal Action in 2022. During the removal action, EPA contractors removed 3460 tons of contaminated soil and disposed of it in two landfills that accept contaminated soil. The Tribe has been coordinating with the City of Plummer on this site for many years. In June of 2024, In cooperation with the Center for Creative Land Recycling (CCLR) and the City of Plummer.

Our first Vision to Action meeting was held on June 13th at the Coeur d'Alene Tribe Wellness Center Facility. At this meeting a history and overview of the area was provided and then surveys were conducted along with the documentation of discussion on potential reuse of the site. A second community meeting will be held on July 31st where CCLR staff will present on the ideas gathered at the first meeting in order to prioritize the community focus for site reuse.



Future Brownfields Activities

Next year, the Tribe is planning to conduct additional brownfield activities on selected sites that include:

- Additional sampling at the Old Tensed Town Landfill.
- Phase II ESA soil and groundwater sampling at the Worley Co-operative Supply.
- Evaluation for hazardous building materials at the Worley Supper Club.
- Open solicitation to evaluate additional sites.

The Tribe will also continue to work on building the components of a Brownfields Program that include ongoing development of Standard Operating Procedures, completion of the Community Outreach Plan, and the development of the Tribe's Environmental Regulatory Code.

For more information or to submit a potential Brownfields site, please contact Ms. Gina Baughn Clean Lands Coordinator for the Tribe's Environmental Programs Office, at (208) 686-2107 or email at gina.baughn@cdatribe-nsn.gov.

**Funding for this project is provided by the U.S. Environmental Protection Agency.*